



HYLAND

ESTATES



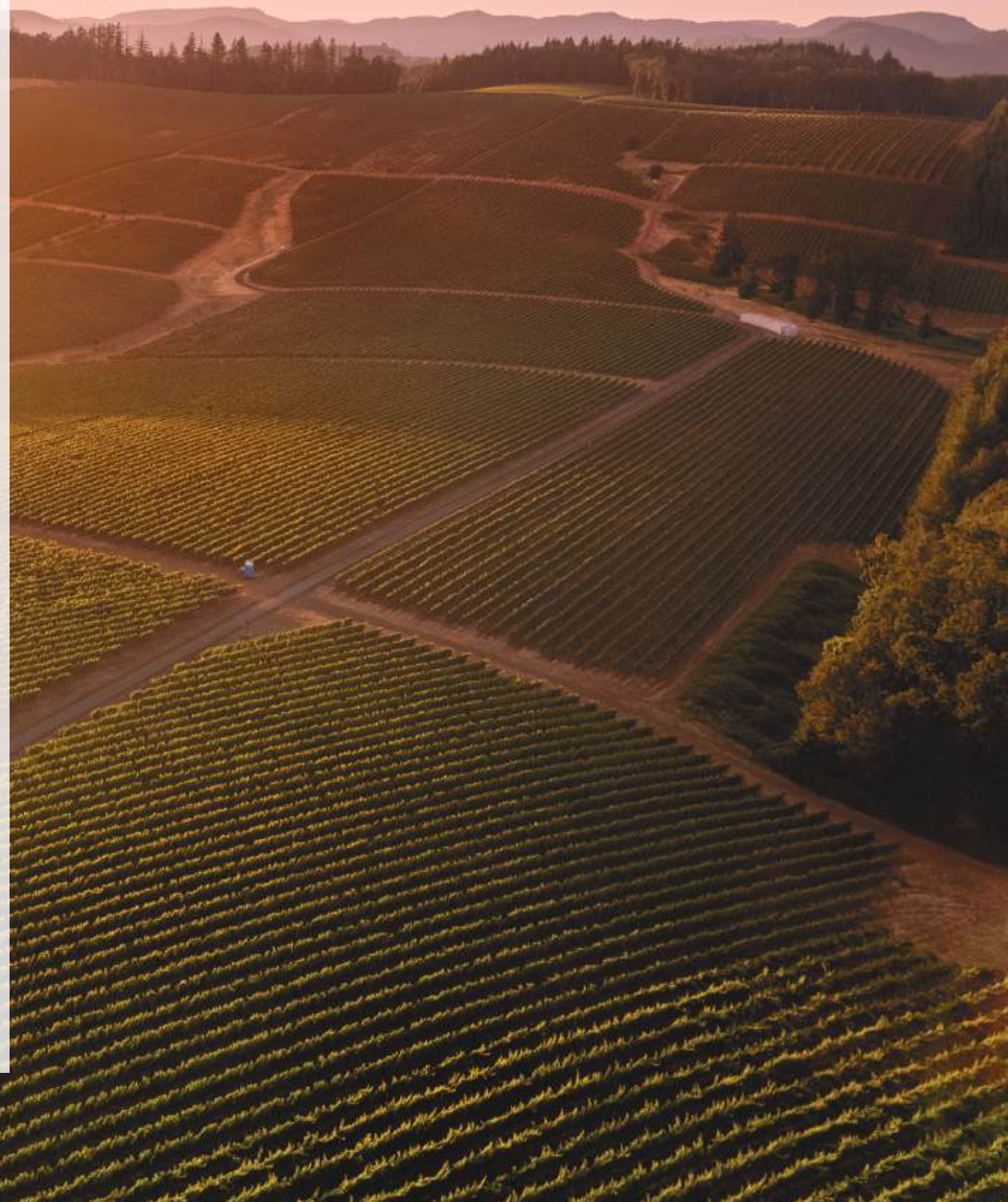
EST. 1971

In 1971, four families came together and toiled by hand to begin planting, dreaming and creating the Hyland Vineyard, the gentle giant that overlooks the Van Duzer corridor. Atop its perch in McMinnville it sits, patiently planted over time, one third on its own roots, the gnarly 50-year old vines entrenched in red volcanic Jory soil.

“We have always believed in making wines that reflect the ground in which they’re rooted. With its self-rooted, unique varietals this historic vineyard presents the ultimate expression of terroir.”

- LAURENT MONTALIEU, CO-FOUNDER &
EXECUTIVE WINEMAKER

In 2007, the property changed hands to new caretakers led by Laurent Montalieu who felt that this vineyard had to be left wild and untamed. He wanted the land to speak in its own voice, adopting a "land not hand" philosophy. The block, the elevation, the growing season, and the individual expression of every vine is present in the glass. Quiet and self-sufficient, the vines produce a textually mature, highly concentrated juice that come with decades of establishing oneself firmly into the land.

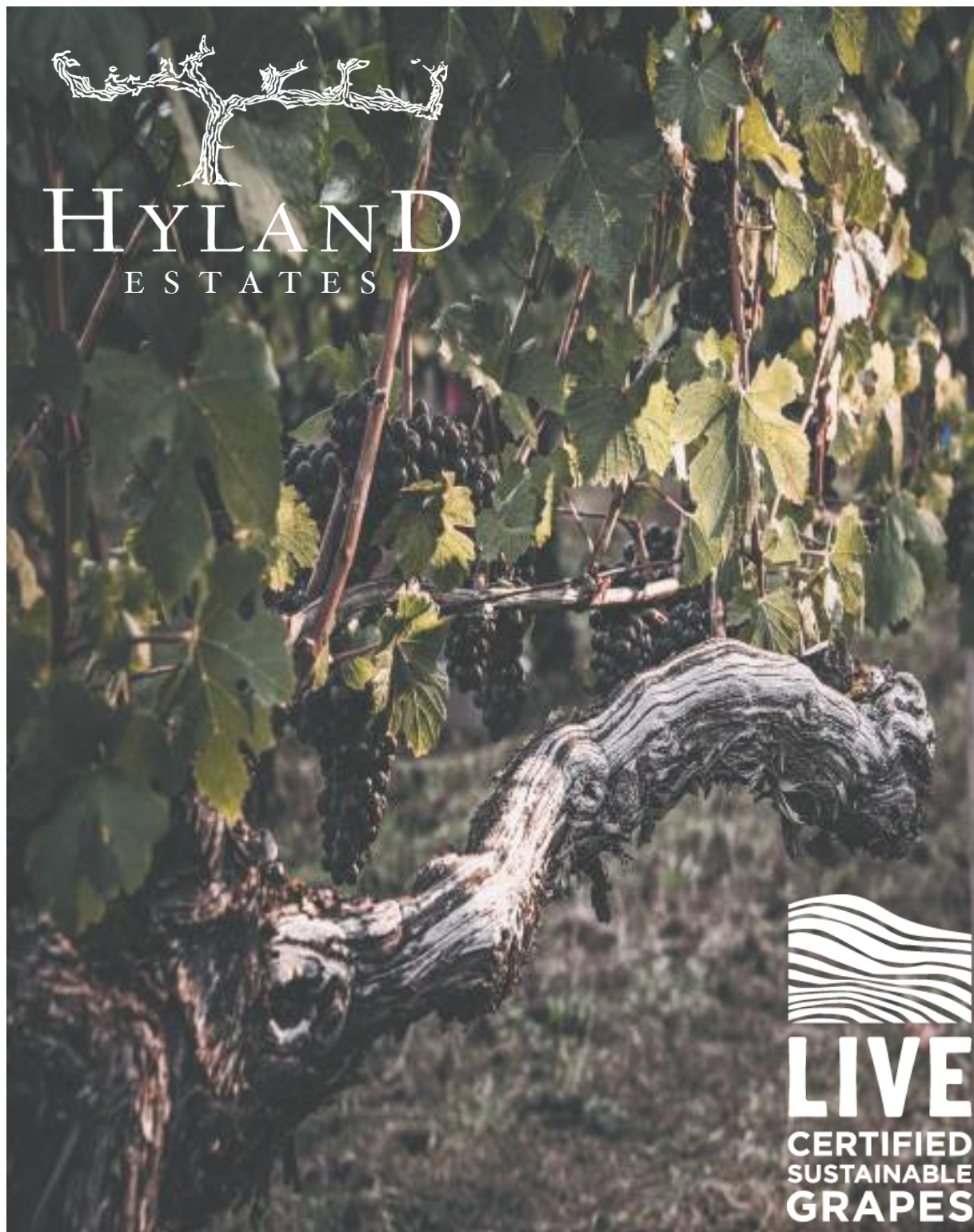


Hyland Vineyard began planting in 1971 by four pioneering friends with own-rooted Chardonnay, Gewürztraminer, Pinot noir, & Riesling that today totals 185 acres.

It is the largest contiguous and second oldest single vineyard site in Oregon.

McMinnville AVA
Soils: 95% Jory / 5 % Nekia
Elevation: 650' - 800'

Hyland Vineyard is LIVE Certified Sustainable. LIVE stands for “Low Impact Viticulture and Enology.”

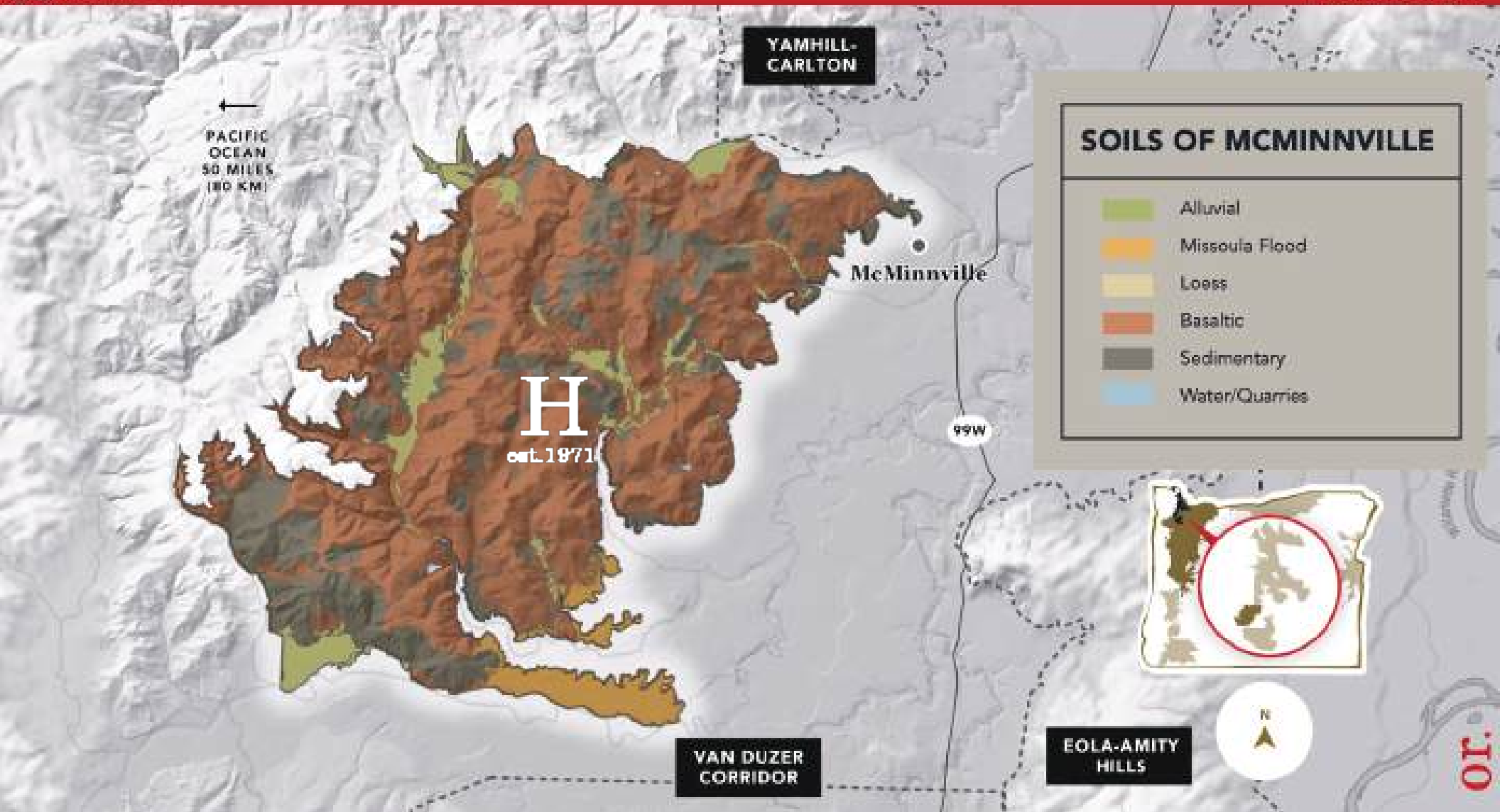




HYLAND
ESTATES

HYLAND VINEYARD
EST. 1971
MCMINNVILLE AVA

HYLAND ESTATES | MCMINNVILLE AVA



VINEYARD MAP

PLANTING BY DECADE

1971	6.22
1972	3.61
1971	6.67
1974	15.54
1979	15.34

THE 70'S 47.38 | 26%

1980	4.39 *GRAFTED
1987	9.78
1989	11.44

THE 80'S 21.22 | 12%

1990	2.32
1997	1.48
1998	8.51

THE 90'S 12.31 | 7%

2002	6.92
2007	29.5
2008	7.94
2009	52.31
2015*	1.75* REGRAFT
2016*	2.64* REGRAFT

THE 00'S 101.06 | 55%

PLANTING BY VARIETY

RIESLING	11.74 6%
GEWÜRZTRAMINER	5.73 3%
CHARDONNAY 108	7.06 4%
MIXED CHARDONNAY	2.64 1%

WHITE WINE 27.17 | 15%

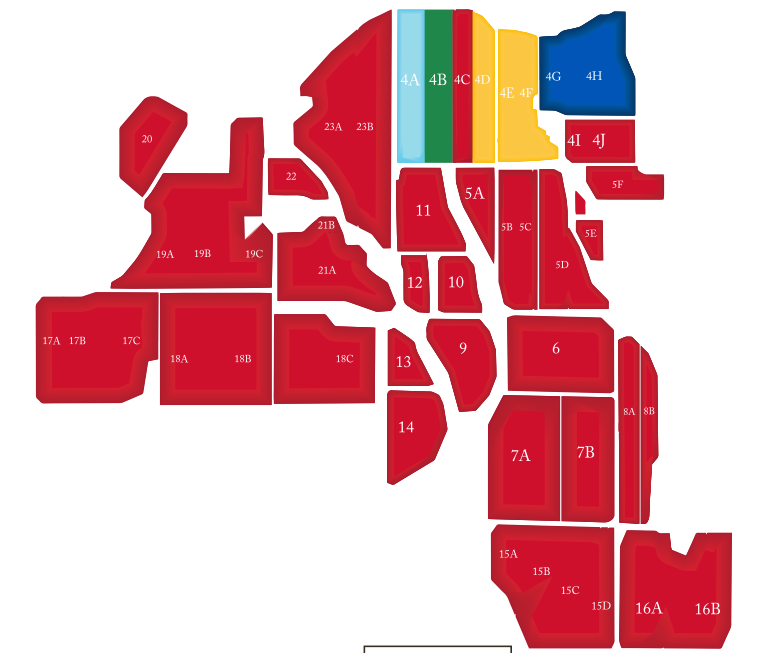
COURY	47.29 26%
WÄDENSWIL	7.24 4%
POMMARD	7.19 4%
CLONE 95	1.75 <1%
DIJON BLEND	0.57 <1%
113	1.63 1%
114	14.91 8%
115	21.88 12%
667	7.03 4%
777	34.75 19%
828	13.51 7%

PINOT NOIR 157.75 | 85%

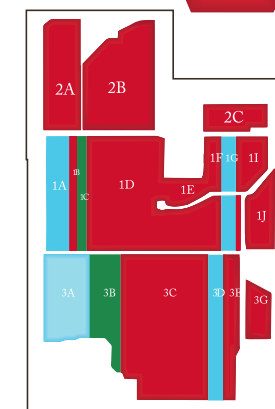
In 1971, Charles Coury and Dick Erath put the first vines in the ground in their own roots, establishing Hyland Vineyard.

Jack Trenhaile took over the vineyard management in 1975 and managed it until 2007 when it was sold to NW Wine Co. The vineyard consists of 185 planted acres on 100% volcanic soils in the McMinnville AVA. The elevation is between 650' – 800'.

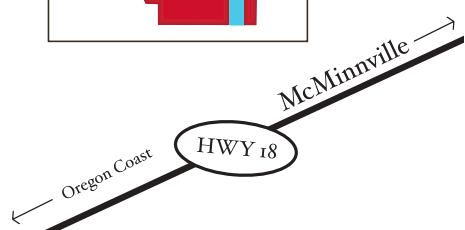
Block	Clone	Year Planted
1A	Riesling	1972
1B	Dijon Blend	2007
1C	Gewurz	1972
1D	Coury	1971
1E	777	2007
1F	Coury	2007
1G	Riesling	1973
1I	777	2007
1J	777	2007
2A	828	2007
2B	Coury	1973
2C	777	2007
3A	Riesling	1974
3B	Gewurz	1974
3C	Coury	1974
3D	Riesling	2007
3E	Riesling	1974
3F	Coury	1974
3G	777	2007
4A	Riesling	1979
4B	Gewurz	1979
4C	Wadenswil	1979
4D	108	1979
4E	108	1979
4F	108	1979
4G	108	1979
4H	Mixed	1980
4I	828	2008
4J	777	2008
5A	Wadenswil	1987
5B	Wadenswil	1987
5C	Pommard	1987
5D	Pommard	1987
5E	828	2008
5F	828	2008
6	Coury	1989
7A	Coury	1989
7B	115	2002
8A	115	2002
8B	Coury	1990
9	Coury	1997
10	Coury	1997
11	Coury	1998
12	Coury	1998
13	Coury	1998
14	Coury	1998
15A	777	2007
15B	777	2007
15C	828	2007
15D	828	2007
16A	828	2007
16B	667	2007
17A	Pommard	2008
17B	Pommard	2008
17C	114	2008
18A	777	2008
18B	115	2008
18C	667	2008
19A	777	2008
19B	115	2008
19C	114	2008
20	777	2008
21A	114	2008
21B	113	2008
22	113	2008
23A	115	2008
23B	777	2008



- Pinot Noir, 160 Acres
- Chardonnay, 7 Acres
- Riesling, 12 Acres
- Gewurztraminer, 5.5 Acres
- Muller Thurgau, 4.4 Acres



Blocks farmed Biodynamically



TIMELINE

- 1866 Donation Land Claims awarded to Jesse & James Yocum and their families.
- 1910 Hyland Orchards established and advertised as one of the first subdivisions.
- 1963 Charles J. Coury published his graduate thesis to UC Davis entitled, "Cold Climate Amelioration."
- 1964 Coury returns from Alsace with cuttings that he gives to his father to plant in Carneros, CA.
- 1966 Coury plants Pinot Noir at his newly acquired vineyard in Forest Grove, OR the same year David Lett plants his Eyrie vineyard in the Dundee Hills.
- 1970 Charles Coury & Dick Erath partner in a nursery operation cultivating and propagating vines. Erath brings true Pommard to Oregon. A severe frost freezes most of the Erath-Coury stock resulting in dissolution of the nursery the next year.
- 1971 Four families (Kreimeyer, Merkley, Welch and Smith) begin to plant the Hyland Vineyard at the foothills of the Coast Range in McMinnville, OR. Coury sells them Riesling, Gewurztraminer and Pinot Noir from his own nursery stock, but will not disclose the origins of the cuttings. The Pinot Noir becomes forever known as the "Coury" Clone, and remains a subject of much debate.
- 1975 Jack Trenhaile becomes the vineyard manager at Hyland vineyard. Dick Erath gives him specific instruction on how to prune the '71 and '74 plantings. Trenhaile becomes the fifth partner in the vineyard.
- 1985 At the famous Oregon-Burgundy Challenge hosted by the International Wine Center in NYC, Hyland Vineyard is the source for 3 of 10 entrants including the top performer.
- 2003 Montalieu forms NW Wine Co., a custom winemaking facility in Dundee, OR.
- 2007 NW Wine Co. purchases Hyland Vineyard. 25 acres of Dijon, Pommard and Wädenswil are planted.
- 2008 18 additional acres of Pinot Noir clones are planted at Hyland Vineyard.
- 2009 Hyland Estates brand established.
- 2010 Hyland grows by 50 acres of Pinot Noir Dijon clones.
- 2011 Hyland Estates brand debuts with 2008 and 2009 vintages.
- 2014 The release of the 2012 Dijon and Pommard clones round out the current clonal selection series.
- 2019 Wine Enthusiast awards the 2017 vintage of Hyland Estates Old-Vine Pinot Noir with 94 pts & #37 on their list of the Top 100 Wines of 2019.
- 2021 Hyland Vineyard celebrates its 50th vintage.



HYLAND VINEYARD: THEN & NOW

The common bond among Victor and Doreen Kreimeyer, Rich and Ruth Welch, Dick and Lila Markley and Jack and Ruth Smith was the U.S. Forestry Service. They invested in the vineyard after their retirements and worked diligently to put in their initial plantings of Coury clone Pinot Noir in 1971, followed by Wädenswil Pinot Noir in 1974.



Sitting on a south facing bench at 650' to 800' in the foothills of the Coastal Range in the McMinnville AVA, this site benefits from cooler average temperatures in the summer and warmer average temperatures in the winter; allowing for a longer and more uniform ripening period. With just over 185 acres planted on volcanic Jory soil holding similar attributes to the red dirt of the acclaimed Dundee Hills AVA, the old, self-rooted Pommard, Wädenswil, and Coury Pinot Noir vines together with newer plantings in 1989 of Dijon 115, provide a number of blending options from this unique site.

In 2007 the friends sold the vineyard to the team at NW Wine Co., trusting the new caretakers vision and happy to see their legacy continue.



LAURENT MONTALIEU
CO-FOUNDER
& EXECUTIVE
WINEMAKER

ROBERT MOSHIER
CHIEF OPERATING
OFFICER



ANNE SERY
DIRECTOR OF
WINEMAKING

BRIAN IRVINE
WINEMAKER



BRUNO CORNEAUX
DIRECTOR OF
VITICULTURE

OLD-VINE GEWÜRZTRAMINER

Own-Rooted & Planted: 1972, 1973, 1974, & 1979

Cases Produced: 800

Reviews: 2023 Vintage

93 Decanter
92 James Suckling
92 International Wine Report

Reviews: 2022 Vintage

94 Editors' Choice
Wine Enthusiast
92 Decanter

OLD-VINE RIESLING

Own-Rooted & Planted: 1972 & 1974

Cases Produced: 600

Reviews: 2023 Vintage

93 International Wine Report
91 Decanter
91 James Suckling

Reviews: 2022 Vintage

93 Editors' Choice
Wine Enthusiast
91 James Suckling

CHARDONNAY

Own-Rooted & Planted: 1979 & 2017

Cases Produced: 600

Reviews: 2022 Vintage

92 Decanter
92 James Suckling
90 Wine Spectator

Reviews: 2021 Vintage

97 Paul Gregutt
95 International Wine Report
94 Cellar Selection
Wine Enthusiast



PETIT ESTATE PINOT NOIR

Own-Rooted & Planted:
1987, 1998, 2007, 2008, 2009

Clones:

Coury, Pommard, Dijon 115, 667, 777, 828

Cases Produced: 2000

Reviews: 2022 Vintage

92 Wine Enthusiast

91 Decanter

91 James Suckling

Reviews: 2021 Vintage

94 Editors' Choice

Wine Enthusiast

92 Wine Spectator

ESTATE PINOT NOIR

Own-Rooted & Planted:
1971, 1973, 1989, 1994, 1997, 1998

Clones:

Coury, Pommard, Dijon 113, 114, 115, 667, 777, 828

Cases Produced: 8500

Reviews: 2022 Vintage

93 Wine Spectator

92 Cellar Selection

Wine Enthusiast

Reviews: 2022 Vintage

94 International Wine Report

92 Cellar Selection

Wine Enthusiast

COURY CLONE PINOT NOIR

Own-Rooted & Planted:
1972, 1973, 1974, 1989, 1997, 1998

Cases Produced: 1600

Reviews: 2022 Vintage

94 Editors' Choice

Wine Enthusiast

92 James Suckling

Reviews: 2021 Vintage

94 International Wine Report

93 Wine Spectator

93 James Suckling





TESTIMONIALS

Sokol Blosser

“We started working with their fruit in the late 1970’s and the blending of Hyland’s fruit with our fruit from the Red Hills of Dundee led us to combine the names into a reserve bottling which we called “Redland.” Hyland Vineyard is a beautiful site and has always been carefully farmed. We have long appreciated and enjoyed working with the fruit and people from Hyland Vineyard.”

- Alison Sokol Blosser, Sokol Blosser Winery



Beaux Frères

“Hyland Vineyard with its high elevation and own-rooted vines that go back to the 70’s provide winemakers like me with grapes that you just cannot get elsewhere. The resulting wines have tension and verve that other vineyards do not produce. This vineyard’s high elevation allow us to harvest later, spreading out the work load during the very busy vintage.”

- Mike Etzel, Beaux Freres



penner-ash WINE CELLARS

“ I have had the pleasure of working with Hyland fruit since 1989 when I was the Winemaker at Rex Hill Vineyards. We have continued working with the fruit at Penner-Ash. There is a lot of diversity and great flavor profiles that we love working with while crafting our wines. It keeps getting better and better with age. Happy 50th Hyland!”

- Lynn Penner-Ash, Penner-Ash Winery



CRISTOM VINEYARDS

“What does it all mean for the wines that are made from these old, own-rooted, high altitude, heritage cloned vines from the Hyland Vineyard? I think it is uniqueness. It is an ability to reflect the sight even when made by different people. I always think of Hyland Vineyard wines as having a very refined character. It never seems to be big and brawny, but more subtle and sublime. It has complexity without heaviness that makes you want to take another sip. Happy 50th Hyland Vineyard - may you see another 50 years! ”

- Steve Doerner, Cristom Vineyards



TOP WILLAMETTE VALLEY PRODUCERS

Hyland Vineyard has been supplying grapes to the most notable producers and some of our dearest friends in the Willamette Valley since the 1970's. We are honored that these renowned wineries craft wine from Hyland Vineyard.



Resonance
Cristom
Penner-Ash
Antica Terra
Domaine Divio
Solena Estate



00
Beaux Freres
Sokol Blosser
Nicolas Jay
Martin Woods
Brooks



HISTORY

In 2021, the Hyland Vineyard celebrated its 50th year. The land has an incredible story beginning with Kalapuyan indigenous tribes who lived in Willamette Valley and, from their language, called the region “ouragan” which meant “storm,” and “walamet,” which meant “to pour water.” In the 1800’s, settlers began to arrive in Oregon and brought cultivation. The Yocum family braved the Oregon Trail in 1847, and the family established itself in McMinnville on the land that would become Hyland Vineyards. In 1971, the land was transformed from an orchard to a vineyard by a family of friends who carefully planted it on its own roots. In 2007, NW Wine Co. took over stewardship of the land and planted additional acres to create the vineyard we see today. 185 glorious acres of Pinot Noir, Chardonnay, Riesling & Gewürztraminer in the McMinnville AVA.



HYLAND ORCHARDS

Hyland Orchards established creating the first “subdivision” in the Willamette Valley. 10-acre lots of heirloom apples and pears.

1866

DONATION LAND CLAIMS

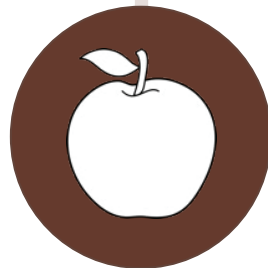
Jesse L. & Minerva Yocum and James P. Yocum awarded Donation Land Claims #2216 & #2423 at Township 5W, Range 5S, Sections 16 & 17 of the Willamette Meridian



1971 - 1972

HYLAND VINEYARD

First plantings of Coury Clone Pinot Noir, Riesling & Gewürztraminer by Dick Erath & Charles Coury. Original Hyland families: Kreimeyer, Merkley, Smith, Trenhaile & Welch.



1910

BURGUNDY CHALLENGE

Willamette Valley Pinot Noir takes top honors at the Burgundy Challenge, a blind tasting of Oregon & French Pinot Noirs. Hyland Estate fruit was in every Oregon entry. Sokol Blosser, Adelsheim & Erath wineries

1985



2003 - 2011

NW WINE CO.

Laurent Montalieu, Danielle Andrus & John Niemeyer start NW Wine Co. in 2003. In 2007, purchase Hyland Vineyard, establish the Hyland Estates brand in 2009 and plant remaining land to top out at 185 acres by 2011.

THE YOCUM FAMILY



Jesse Luper
Yocum
1815 - 1899



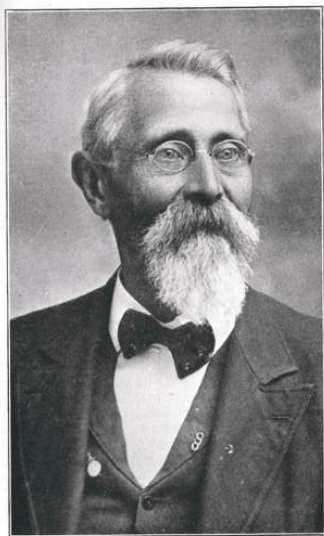
Minerva Cooper
Yocum
1818 - 1887

The Yocum family traveled from Bourbon, Kentucky in 1847 over the Oregon Trail. One of the first pioneers, Jacob & Mary Yocum made the trek with many of their 13 adult children to settle in Oregon. They lived as gypsy settlers for 10 years before settling in McMinnville.

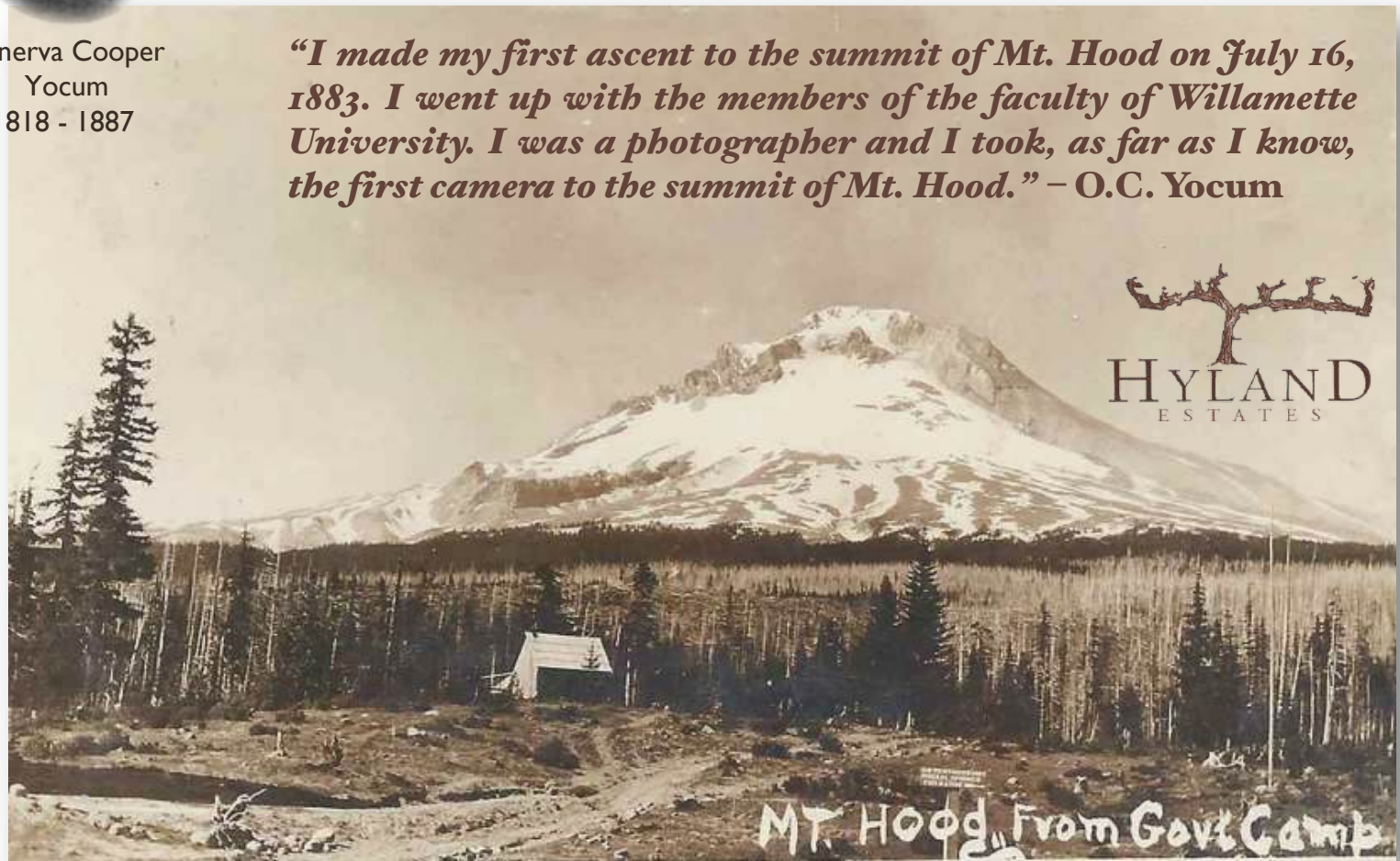
Jesse Luper Yocum, wife, Minerva Cooper Yocum and his brother, James Powell Yocum settled on the property in McMinnville in 1866. The Donation Land Claim system in Oregon awarded Jesse & Minerva 642 acres and James, 160 acres. Jesse and Minerva had 12 children.

Oliver Cooper Yocum, better known as "O.C." was just five years old when his parents Jesse & Minerva embarked on the Oregon Trail. O.C. became an avid mountain climber, chemist, guide and one of the first revolutionary "dry" photographers who took the first photo at the summit of Mt. Hood's Government Camp.

"I made my first ascent to the summit of Mt. Hood on July 16, 1883. I went up with the members of the faculty of Willamette University. I was a photographer and I took, as far as I know, the first camera to the summit of Mt. Hood." – O.C. Yocum



Oliver "O.C." Cooper
Yocum
1842 - 1928



Charles Jules Coury was an influential, outspoken and controversial character in the early formation of the Willamette Valley.

“Coury was born in Southern California but grew up in Oregon. He received a Bachelor of Arts degree in climatology from the University of California at Los Angeles in 1952, which led him to become well versed in agricultural growing seasons. While serving as a Naval officer during the Korean War, he became intrigued by French wines served in the officer’s club. After the war, this interest led him to a job selling imported European wines for Jules Wile in Southern California. He then decided to pursue a career in winemaking and entered the University of California at Davis (UCD), where his classmate was David Lett who would go on to found The Eyrie Vineyards. Coury obtained a Masters of Science degree in Horticulture from UCD, graduating on June 10, 1964. He submitted his Masters thesis in early 1964 and received his degree while in Alsace, France where he was studying cool climate viticulture. – Pinot File, 2012

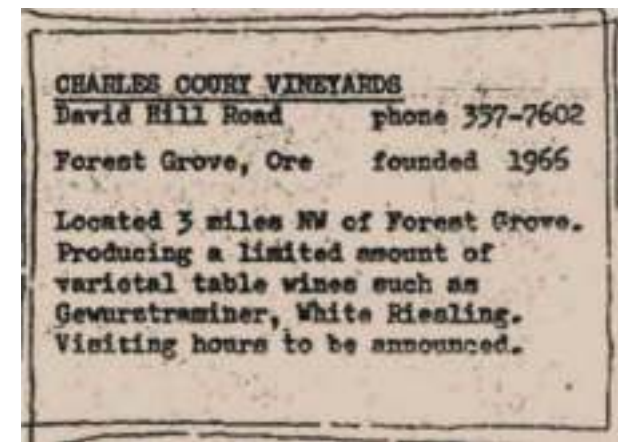
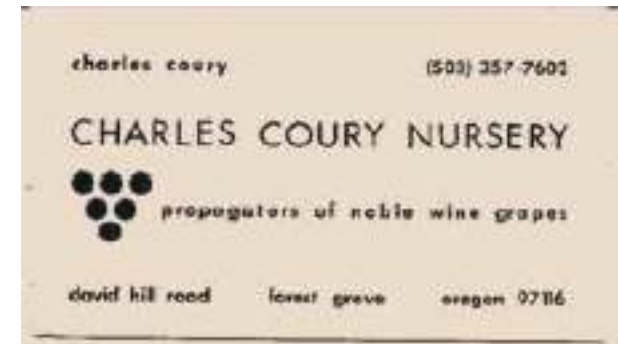
“My master’s thesis was a very, very clever approach to climate and grape choice. I knew there were great similarities between the climates of France and Oregon, which are nearly on the same latitude. My professors argued with me, but I was right. I had an absolute climatological basis for my thesis and knew that the cool, rainy conditions of Oregon would be ideal, particularly for the Pinot Noir, Chardonnay and Riesling varieties.” - The Boys Up North (Paul Pintarich, 1997)

In 1964, Coury was in Colmar, Alsace, France studying with the viticulturist Pierre Huglin. Coury returned from France and sent cuttings of a Pinot Noir clone to David Lett to propagate in April of 1965. Coury purchased property in Forest Grove, Oregon and planted the Charles Coury Vineyards with presumably a variety of Pinot Noir clones in 1966, today known as the David Hill Vineyard. Charles Coury and Dick Erath began the Erath-Coury Nursery from 1970 to mid-1971.

“There has always been the story that Coury had smuggled cuttings into the United States, presumably from Colmar. When Coury was in Colmar, clonal selection work was focused on finding one or more clones of each variety that represented the typical attributes sought in Alsace. There was only one clone of Pinot Noir available at the time, clone 538. At a tasting of a range of Oregon Pinot Noirs in the fall of 1973, Coury amazed everyone with a very dark-colored wine made from a Pinot Noir clone whose identity and origin he would not reveal. I suspect it was clone 538.” – David Adelsheim, Pinot File, 2012

Coury and Erath helped to plant the Hyland Vineyard in 1971 with material from their nursery; Riesling, Gewürztraminer, and 6.22 acres of Pinot Noir that became known as the “Coury Clone.” Hyland Vineyard has the most extensive plantings of the controversial Coury Clone in the world, a total of 47 acres, 26% of the vineyard. The Coury Clone on the Hyland property produces texturally mature, concentrated juice that exhibits darkly colored hues with tension and floral aromas, tea leaf, red fruit, low tannin and complex structure.

CHARLES JULES COURY 1931-2004





HYLAND

ESTATES

NATIONAL SALES, DISTRIBUTION, & EDUCATION

COLIN EDDY

VP OF SALES

(832) 512-7755

COLIN@NWWINECO.COM

JESSICA ENDSWORTH

VP OF ON PREMISE & EDUCATION

(503) 522-6971

JESSICA@NWWINECO.COM